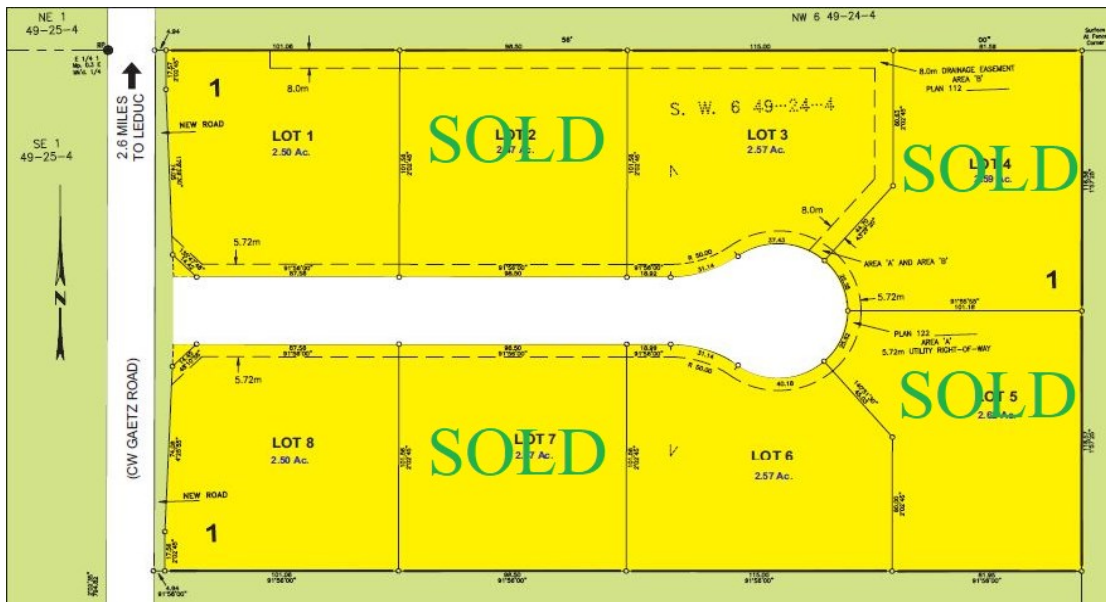


## Price List

Lot	Description	Acres	Price *
Lot 1	North Corner Lot Backing Shelterbelt	2.50 acre	\$219,000
Lot 2	North Backing Shelterbelt	2.47 acre	Sold to a nice family
Lot 3	North Pie Lot with drilled water well	2.57 acre	\$239,000
Lot 4	North Corner Pie Lot with drilled water well	2.60 acre	Sold to a nice family
Lot 5	South Corner Pie lot with drilled water well	2.62 acre	Sold to a nice family
Lot 6	South Pie Lot	2.57 acre	\$239,000
Lot 7	South Lot	2.47 acre	Sold to a nice family
Lot 8	South Corner Lot	2.50 acre	\$229,000

\* Prices exclude GST.



Developing and living on an acreage requires a considerable amount of water. Our new subdivision is one of the few developments in the County of Leduc that has been approved to allow water wells on each lot.

Lots 3, 4, 5, and 6 already have drilled water wells. Acreage owners in our subdivision will save thousands of dollars each year as well as knowing that their homes will have a lower carbon foot print than having water hauled.

